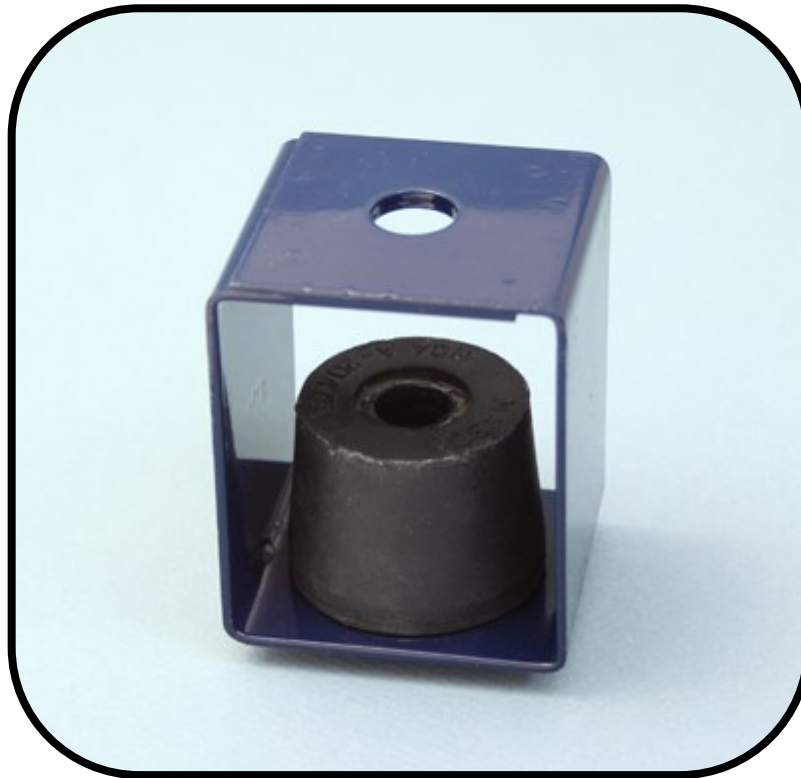




MASON U.K.

VIBRATION CONTROL PRODUCTS AND
ACOUSTIC FLOOR SYSTEMS

MASON HD LDS Rubber Hanger (All Variants)



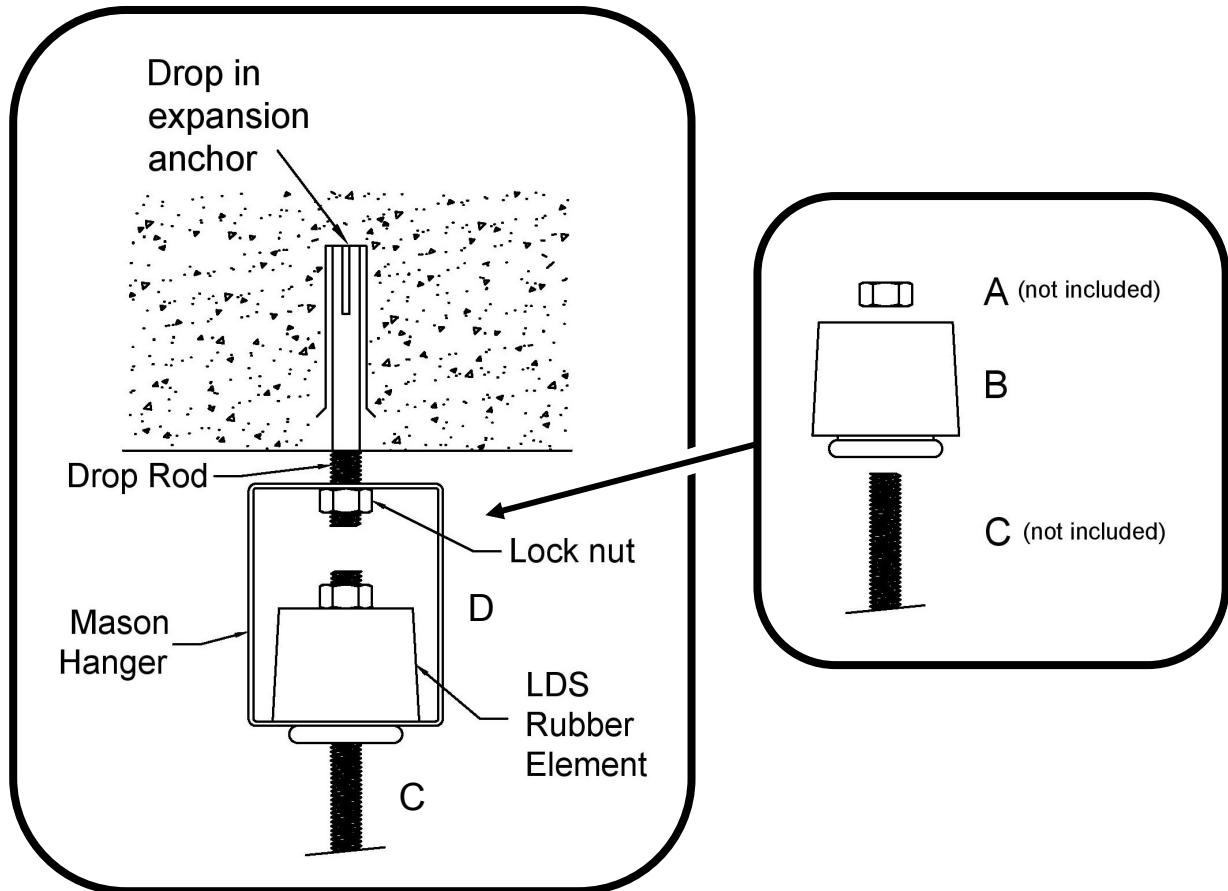
Installation Instructions

- Mason HD hangers are designed to gain a deflection of approximately 9mm at rated capacity.
- Please allow for the rated deflection of the rubber hanger when installing ceiling systems.

Mason U.K. Ltd.
Unit 6 Abbey Business Park
Monks Walk
Farnham, Surrey
GU9 8HT

Phone: 01252 716610
Fax: 01252 716630
E-mail: info@mason-uk-co.uk
Web: www.mason-uk.co.uk

Typical Installation for Mason HD Hangers



- | | | |
|----------|---|---------------------------------|
| A | - | Self-locking nut (not supplied) |
| B | - | LDS Rubber element |
| C | - | Drop rod (not supplied) |
| D | - | Mason hanger box |

Installation instructions:

- Fix the top of the drop rod to the soffit, bracket or ceiling joist as required.
- Assemble the hanger as above.
- Set all the hangers to the same height by laser or similar method.
- Install the ceiling system in the normal way.

Mason U.K. Ltd.
Unit 6 Abbey Business Park
Monks Walk
Farnham, Surrey
GU9 8HT

Phone: 01252 716610
Fax: 01252 716630
E-mail: info@mason-uk-co.uk
Web: www.mason-uk.co.uk