



MASON UK LTD

Vibration Control Products
& Acoustic Floor Systems

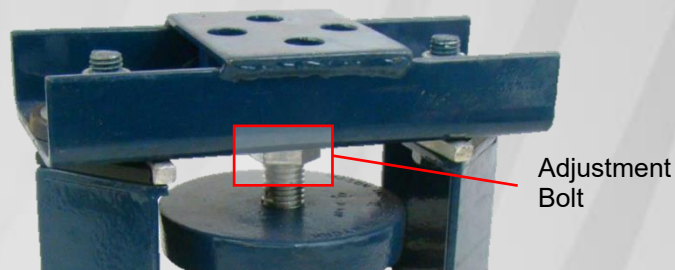
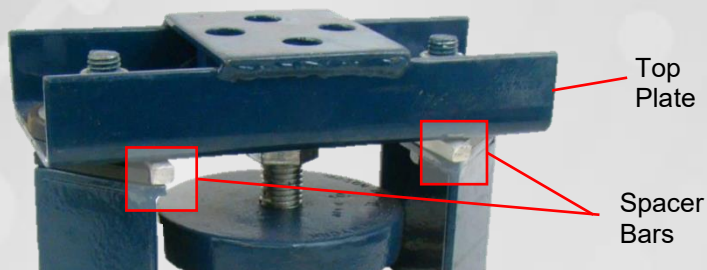
Mason UK Ltd, Unit 6, Abbey Business Park,
Monks Walk, Farnham, GU9 8HT

Tel: 01252 716610 **Email:** info@masonuk.co.uk

Web: www.masonuk.co.uk

METHOD STATEMENT

Installation and Adjustment of SLR Restrained Spring Isolators



Step 1

Position the mounts where required and keep them in their **locked position** with the spacer bars in place, adjustment bolt fully retracted, and the restraining nuts locked against the top plate.

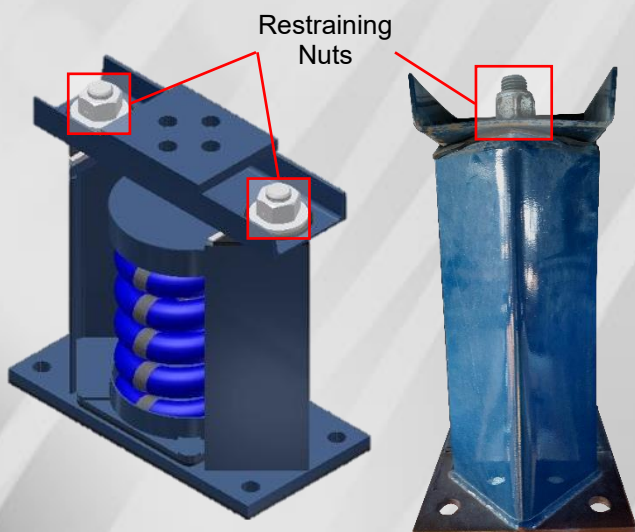
The floor under the mounts must be flat and level. If mounts are to be welded in position, remove the rubber friction pad. Mountings subjected to seismic or wind forces must be bolted or welded in position. Bolt or weld the equipment to the top plate.

Step 2

Make all the required connections to the equipment and fill the system.

The equipment should be at the normal operating weight before the springs are adjusted.

Release all the restraining nuts and leave a 3mm clearance between each nut and the top plate.



Step 3

Turn the adjustment bolt on each spring mount with a spanner anti-clockwise 2 full turns. This starts to transfer weight to the spring, causing it to compress.

Repeat on each mount in sequence as many times as necessary until the spacer bars below the top plate are **just loose**. If the spacer bars in one mount start to become loose, **stop adjusting** that mount and continue to adjust the others until all the spacer bars are **just loose**.

Continually adjust the restraining nuts to maintain a 3mm clearance between each nut and the top plate.

Step 4

Regularly check the equipment level and adjust each mount accordingly. Continue to turn the adjustment bolt anti-clockwise to lift further, or clockwise to lower. Continue to adjust the mounts until the equipment is level and all spacer bars are **just loose**.

Step 5

When the equipment is floating on the springs and is level, ensure the restraining nuts still have 3mm clearance between the nuts and the top plate.

Only at this point can the spacer bars be removed.

